

Lanboss Software Limited



Lanboss Preview

Copyright

This Guide and the Lanboss products it describes are subject to License Agreements between You, the User and Lanboss Software Limited. This guide and the Lanboss products it describes are Copyright © 1999 - 2010, Lanboss Software Limited. All rights reserved.

Lanboss Software Limited,
Carlyle House,
Ramsdell Road,
Monk Sherborne,
Tadley,
Hampshire, RG26 5HS
UNITED KINGDOM

Tel: +44 (0) 1256 851 500
Web: <http://www.lanboss.com>
Email: info@lanboss.com

Trademarks

Lanboss™ is a trademark of Lanboss Software Limited
Microsoft® and Windows© are trademarks of Microsoft Corporation
Throughout this guide, we recognise all registered trademarks

Disclaimer

Warning:

Lanboss Software Limited assumes no responsibility for errors or omissions in this document. Nor does Lanboss Software Limited make any commitment to update the information contained herein.

This guide has been written for Lanboss Preview. Please ensure that you check for later version updates from www.lanboss.com before installation.

Table of Contents

| | | |
|----------|--|-----------|
| 1 | Introduction | 2 |
| | Welcome to Lanboss Preview | 2 |
| 2 | Installation | 3 |
| | Manual Edits | 3 |
| | Saved Defaults | 3 |
| 3 | Theory Of Operation | 4 |
| 4 | Using Lanboss Preview | 5 |
| | The Main Dialog | 5 |
| | Menus - The Main Menu | 5 |
| | Toolbars | 7 |
| | Shortcut Keys | 8 |
| | The Print Dialog | 9 |
| | The Page Setup Dialog | 10 |
| 5 | Appendix | 11 |
| | File Associations | 11 |
| | Example Registry File | 11 |
| | Explorers View / Folder Options Dialogue | 11 |
| | Click on a link in Internet Explorer | 12 |
| | Double click on a file in Explorer | 12 |
| | Command Line Options | 13 |
| | Index | 14 |

1. Introduction

1.1 Welcome to Lanboss Preview

Lanboss Preview is a standalone print preview program designed to view and print fixed format text reports. Its features include:

| | |
|--------------------------|---|
| Automatic Scaling | Scales the text font size to match the page width and height |
| Zoom | The page can be viewed at virtually any Zoom level, with 'Whole Page' selected the Zoomed image will also dynamically scale to the size of the main dialog |
| Printer Selection | You may select and configure the printer you wish to print to from the main dialog |
| View History | Previous documents are saved to an encrypted database for easy retrieval at a later date |
| Admin Mode | Using the /S command line switch Lanboss Preview will save all its settings to registry so that you can export and distribute the settings to other users, who will then use the new default values |
| Default Mode | Using the /D command line switch Lanboss Preview will load it's internal default values instead of reading them from the registry |

2. Installation

Lanboss Preview is expecting a file name as one of its command line parameters; this can be accomplished in several ways:

- Associate a file type in Explorer with it
- Drag a file on it in Explorer
- Run it from the command prompt with a file name parameter

During the installation the Lanboss Preview setup program will create the desired file associations up so that double clicking on a file in Explorer, or single clicking on a link in Internet Explorer will open up Lanboss Preview with the selected text file. (See Appendix 5.1 for details on the file association setup).

Once you have chosen and implemented your run method, the next step is to setup the default parameters. The two types of configuration parameters follow

2.1 Manual Edits

These are edits to the registry that Lanboss Preview will read whilst loading, but cannot save itself with the /S command line parameter.

There is currently only one setting, but this may be added to, it is

```
HKEY_LOCAL_MACHINE\SOFTWARE\Lanboss\lbPreview\Settings  
MaxLines : DWORD
```

Set this to the value required for the maximum number of lines allowed on a page, the default is 200 if not specified.

This setting is required in the circumstances where the file Lanboss Preview is loading doesn't have and form feeds in it so tries to squeeze the entire file onto one page by reducing its font size. The minimum font size allowed is 2pt, if the number of lines dictates a size below this, and then the remaining lines will flow onto the next page.

2.2 Saved Defaults

Under normal operation, Lanboss Preview will read its settings from the system registry under the key:

```
HKEY_LOCAL_MACHINE\SOFTWARE\Lanboss\lbPreview
```

If you wish to make changes to these defaults, run Lanboss Preview with either /S and /D command line switches or just the /S parameter. The /S parameter tells Lanboss Preview to Save its settings, if you use the /D parameter as well it will stop Lanboss Preview from reading its settings from the registry first so using it's internal defaults.

Once running with the /S parameter any changes to the toolbar, dialog size etc will be saved to the registry (N.B Not all things are saved, but additional things could be added if required).

Once you have Lanboss Preview exactly as you require, exit the program and take a copy of the above registry key, this can then be imported on the other workstations you wish to use the program.

3. Theory Of Operation

The primary task of Lanboss Preview is to make reports destined for a text printer display correctly on screen and match the intended page breaks.

In order to do this Lanboss Preview has to scale the font size down until the page of the report fits on the page to be printed.

To calculate all this it does the following:

- Loads the entire text file into memory
- Scans the loaded file to see what the maximum number of characters per line is
- Knowing the maximum number of characters per line tells it whether to use a portrait or a landscape page layout. If the line length is less than or equal to 85 it is considered a portrait report, above 85 and it is considered a landscape report
- Scans the loaded file to see what the maximum number of lines there are between page breaks
- Once the number of lines per page is known it decreases the font size until that number of lines fits on the page
- Once the lines fit on the page, it then, if required reduces the font size again so that the maximum line length will fit on the page

Once this has all been calculated it displays the results on the preview panel of the main dialog. When changes to the printer, font, margins etc are made it re-calculates the font size and re-displays the results in the preview panel. (Note, it doesn't re-load the file or re-calculate the line or character maximums, just adjusts the font size based on the original calculations).

4. Using Lanboss Preview

4.1 The Main Dialog

The main dialog shows the preview of the printout and allows the configuration of the printer, page layout, fonts etc.

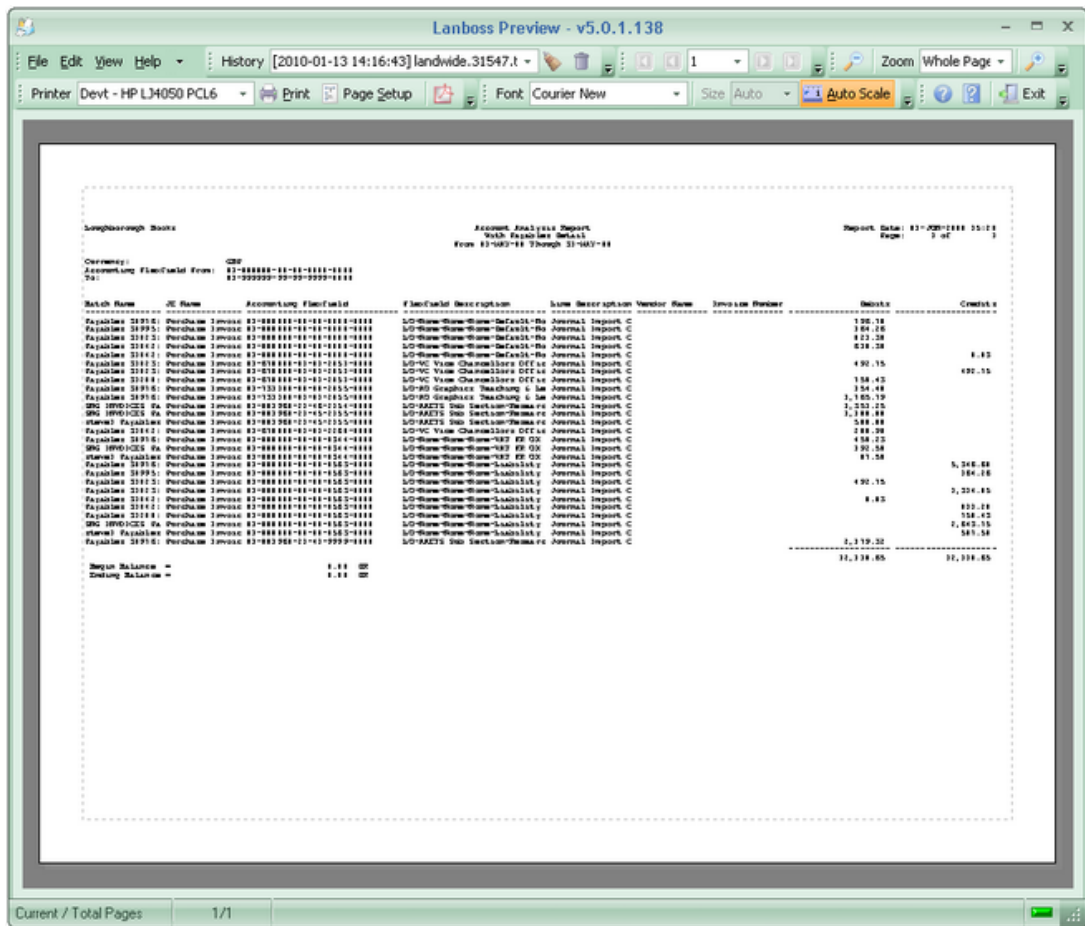


Figure 1

4.2 Menus - The Main Menu

The main menu has four headings, File, Edit, View and Help the file menu contains the following.

File Menu

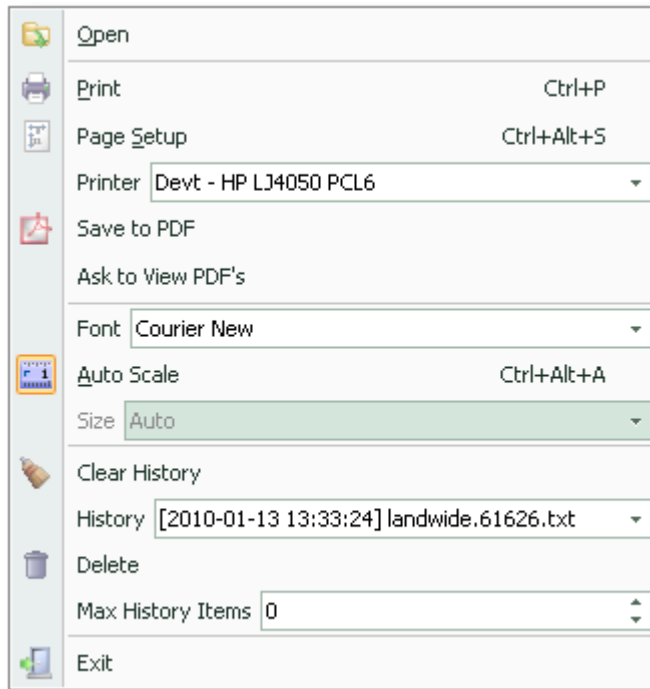


Figure 2

| | |
|--------------------------|--|
| Open | allows opening of other text files for viewing |
| Print | displays the print dialog (see the Print Dialogue section) |
| Page Setup | displays the page setup dialog (see Page Setup section) |
| Printer | select the required printer from the drop down list |
| Save to PDF | allows you to save the current document as an Adobe PDF file |
| Ask to View PDF's | check this to be prompted to view PDF files after they have been generated |
| Font | which font should be used |
| Auto Scale | auto scale the document font |
| Size | if Auto Scale is disabled, select the font size for the document |
| Clear History | clear all history items from the list |
| History | select a previous document to display |
| Delete | delete the selected history item from the list |
| Max History Items | maximum number of history items to maintain in the list |
| Exit | this exits the Lanboss Preview |

Edit Menu



Figure 3

The Edit Menu has only one option, Copy All To Clipboard which copies the entire contents of the file being viewed to the clipboard.

View Menu

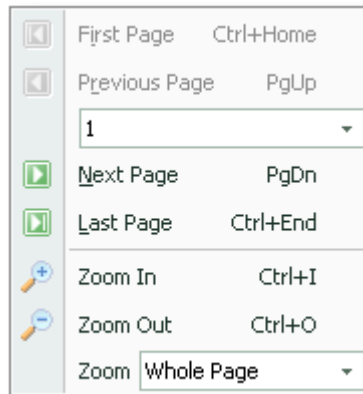


Figure 4

The view menu contains the following:

| | |
|----------------------|---|
| First Page | go to the first page of the document |
| Previous Page | go to the previous page of the document |
| Select Page | allows the user to select a specific page |
| Next Page | go to the next page of the document |
| Last Page | go to the last page of the document |
| Zoom In | zoom in on the document |
| Zoom Out | zoom out on the document |
| Zoom | select the zoom level for the document |

Help Menu

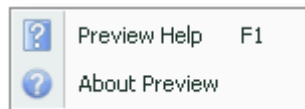


Figure 5

The help menu contains the following:

| | |
|----------------------|---|
| Preview Help | opens the Preview Compiled HTML Help File |
| About Preview | shows the Preview About screen |

4.3 Toolbars

Toolbars within Lanboss Preview can be positioned along the top or the bottom of the main dialog, currently there are:

The Print Toolbar



Figure 6.

From this toolbar you can select the printer you wish to print to, enter the Print or Page setup dialogs or save the document as an Adobe PDF file.

The Navigation Toolbar



Figure 7.

From this toolbar the user can navigate the document, either by clicking on the navigation buttons or selecting a specific page from the dropdown list.

The Fonts Toolbar

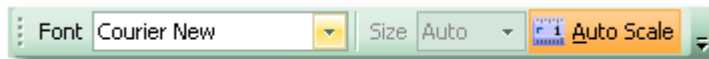


Figure 8.

From this toolbar you can select the font you wish to print the document in and the size of the font if you don't wish it to be automatically scaled.

The Zoom Toolbar

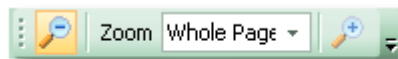


Figure 9.

The Zoom toolbar allows you to select one of the predefined zoom levels, enter one of your choice or Zoom in/out at predefined step levels.

History Toolbar

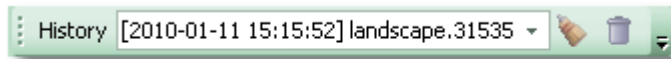


Figure 10.

The History toolbar allows you to quickly recall previous documents. The Trashcan button deletes the selected item from the list of documents, the sweeping brush button removes all documents from the history list.

Help Toolbar

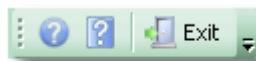


Figure 11.

The help toolbar allows you to view the About screen, Help file and exit Lanboss Preview.

4.4 Shortcut Keys

Within Lanboss Preview the following short cut keys are defined:

| | |
|--------|---|
| Alt+P | enter the Page Setup Dialog |
| Alt+F4 | exit the program |

| | |
|-----------|--|
| Ctrl+P | enter the Print Dialog |
| Ctrl+C | copy the current document to the clipboard |
| Ctrl+Home | go to the first page of the document |
| Ctrl+End | go to the last page of the document |
| PgDn | go to the next page of the document |
| PgUp | go to the previous page of the document |
| + | (Plus Key) Zoom in on the document |
| - | (Minus Key) Zoom out on the document |
| F1 | display the Lanboss Preview Help File |

4.5 The Print Dialog

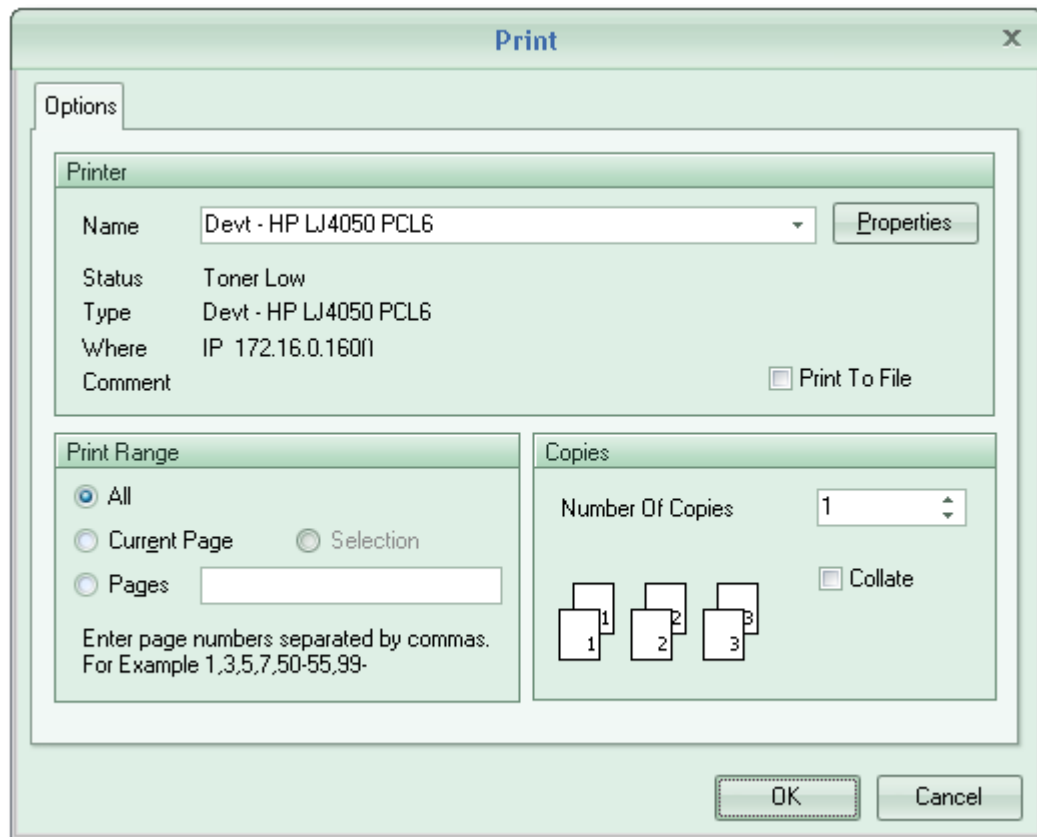


Figure 12.

The print dialog allows you to print the document, select here:

| | |
|--------------------|--|
| Printer | change the current printers properties and select whether you wish to print to file or not |
| Print Range | the range of pages you wish to print |
| Copies | the number of copies you wish printed and whether or not you wish them to be collated |

4.6 The Page Setup Dialog

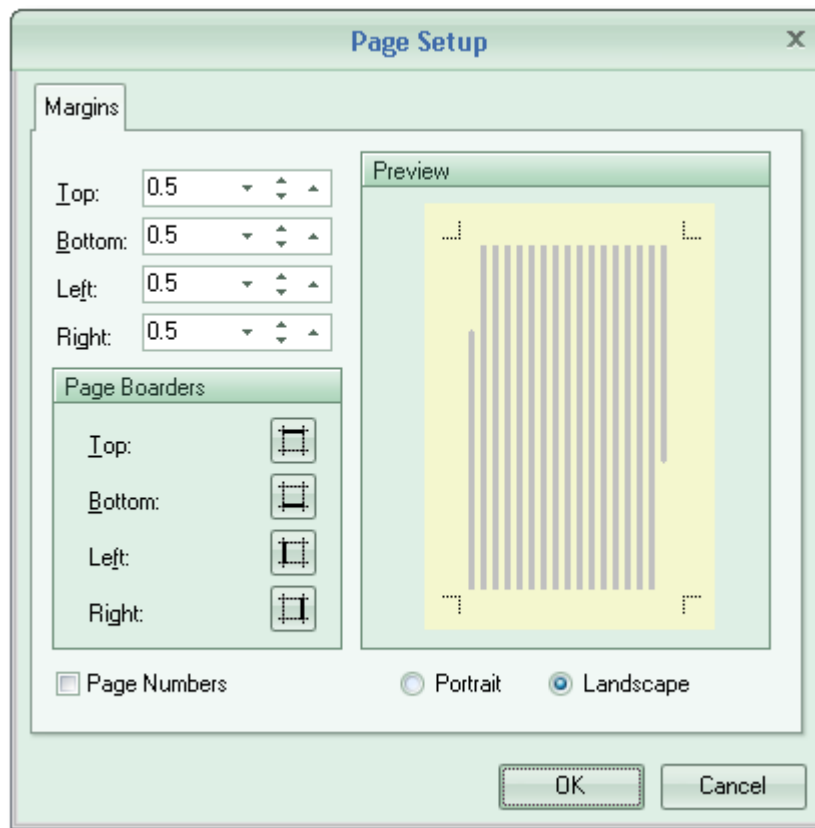


Figure 13.

The page setup dialog allows you to change the following:

- | | |
|-----------------------------|---|
| Page Margins | here you may alter the page margins in inches |
| Page Borders | press the buttons here to turn on or off the line margin printed on the corresponding edge of the paper |
| Page Numbers | check this button to print page numbers in the lower right hand corner of the page |
| Portrait / Landscape | select here whether the page should be portrait or landscape, altering this disables the auto scale feature |

5. Appendix

5.1 File Associations

In order for Explorer or Internet Explorer to automatically open up Lanboss Preview when a file is clicked on, either the file type must be associated with Lanboss Preview or the file must not have an extension at all.

5.1.1 Example Registry File

The following file is an example of the registry changes needed to associate .out files with Lanboss Preview, Preview being located in the C:\Program Files\Lanboss\Preview directory.

```
REGEDIT4

[HKEY_CLASSES_ROOT\.out]
@="LanbossPreviewDataFile"

[HKEY_CLASSES_ROOT\LanbossPreviewDataFile]
@="Lanboss Preview Data File"
"EditFlags"=dword:00010000
"BrowserFlags"=dword:00000008

[HKEY_CLASSES_ROOT\LanbossPreviewDataFile\DefaultIcon]
@="C:\\Program Files\\Lanboss\\Preview\\lbPreview.exe,0"

[HKEY_CLASSES_ROOT\LanbossPreviewDataFile\Shell]
@="Open"

[HKEY_CLASSES_ROOT\LanbossPreviewDataFile\Shell\Open]

[HKEY_CLASSES_ROOT\LanbossPreviewDataFile\Shell\Open\Command]
@="\"C:\\Program Files\\Lanboss\\Preview\\lbPreview.exe\" \"%1\""
```

5.1.2 Explorers View / Folder Options Dialogue

This is the more official route for setting up file associations, the file types tab on this dialog allows users to configure which Application opens up file, along with things like confirming whether or not the user always wants to open it without prompting.

How Lanboss Preview Setup does it

The Lanboss preview setup program (or using the /R or /X [command line](#) switches) directly edits the system registry to create the required file associations; specifically it makes the following additions to the registry:

Firstly it creates the base file type key, this will differ depending on the chosen file extension:

```
HKEY_LOCAL_MACHINE\SOFTWARE\SOFTWARE\Classes\{chosen extension}
```

It sets this keys default value to:

```
LanbossPreviewDataFile
```

Which tells applications where to look for this type of file.

It then creates the LanbossPreviewDataFile key, i.e.

```
HKEY_LOCAL_MACHINE\SOFTWARE\SOFTWARE\Classes\LanbossPreviewDataFile
```

and set's this keys default value to

```
LanbossPreviewDataFile
```

which shows up as the description of the file in Explorer. It then adds two other values to this key:

```
BrowserFlags = 8  
EditFlags=65536
```

This tells Internet Explorer to open the specified file type without asking.

It then adds the location of the program to this key by adding the subkey:

```
Shell\Open\Command
```

and sets it's default value to the Preview executable e.g.

```
""C:\Program Files\lbPreview.exe"" "%1""
```

The extra double quotes are there to stop problems with paths with spaces in them, and the %1 tells explorer the Preview is expecting the filename to be passed to it. It then sets up the default icon that should be shown in Explorer for the chosen file type by adding a subkey:

```
DefaultIcon
```

and setting its default value to Previews path e.g.

```
C:\Program Files \Lanboss\lbPreview.exe,0
```

Once the setup program has made these additions to the registry, double clicking on a file in Explorer or single clicking on a link in Internet Explorer, with the specified file extension, will cause Lanboss Preview to open up and display it. Files with the specified extension will also show up in Explorer with the Preview Icon and the file type will show up as "Lanboss Preview Data File".

5.1.3 Click on a link in Internet Explorer

This does a similar thing as in Explorer, but instead of just opening, they get the option to download the file. This Internet Explorer option can be disabled by either running the setup program and selecting the disable open / save as option, or by running preview with the /R [command line](#).

5.1.4 Double click on a file in Explorer

This is the method most users discover by accident, Explorer being helpful allows them to select which program they would like to use to open the file, and if they would like the same thing to happen next time.

5.2 Command Line Options

Lanboss Preview supports the following Command Line Options:

| | |
|----------------|--|
| <FileName> | the filename that Lanboss Preview should display |
| /S | Save settings to registry |
| /D | Load internal Default settings and ignore registry |
| /R=<Extension> | Setup file extension associations (e.g. /R=.out) This associates the lbPreview.exe program with the specified file extension, plus files with no extension and disables the Internet Explorer 'Save As' dialogue for the specified association |
| /X | Remove file extension associations |

Index

- A -

Admin Mode 2
associate 11
associated 11
associations 3, 11, 13
Auto Scale 5
Automatic Scaling 2

- C -

Clear History 5
Command 13
command line 3
command prompt 3
configuration 5
Copies 9
Copy All To Clipboard 5

- D -

Default Mode 2
Delete 5
disables 13
download 12

- E -

Edit 5
Exit 5
Explorer 3, 11, 12
extension 11, 13

- F -

File 5
File Associations 11
First Page 5
Font 5

- H -

Help 5
History 5
History Toolbar 7

HKEY_LOCAL_MACHINE 3

- I -

Internet 11
Internet Explorer 11

- K -

keys 8

- L -

Landscape 10
Last Page 5
Line 13

- M -

Max History Items 5
memory 4

- N -

Next Page 5

- O -

Open 5

- P -

Page Borders 10
Page Margins 10
Page Numbers 10
Page Setup 5
parameter 3
Portrait 10
Previous Page 5
Print 5
Print Range 9
Printer 5, 9
Printer Selection 2

- R -

registry 3, 11, 13

- S -

Select Page 5
short cut 8
Size 5

- T -

text 5
The Fonts Toolbar 7
The Navigation Toolbar 7
The Print Toolbar 7
The Zoom Toolbar 7
Toolbars 7

- V -

View 5
View History 2

- Z -

Zoom 2, 5
Zoom In 5
Zoom Out 5

